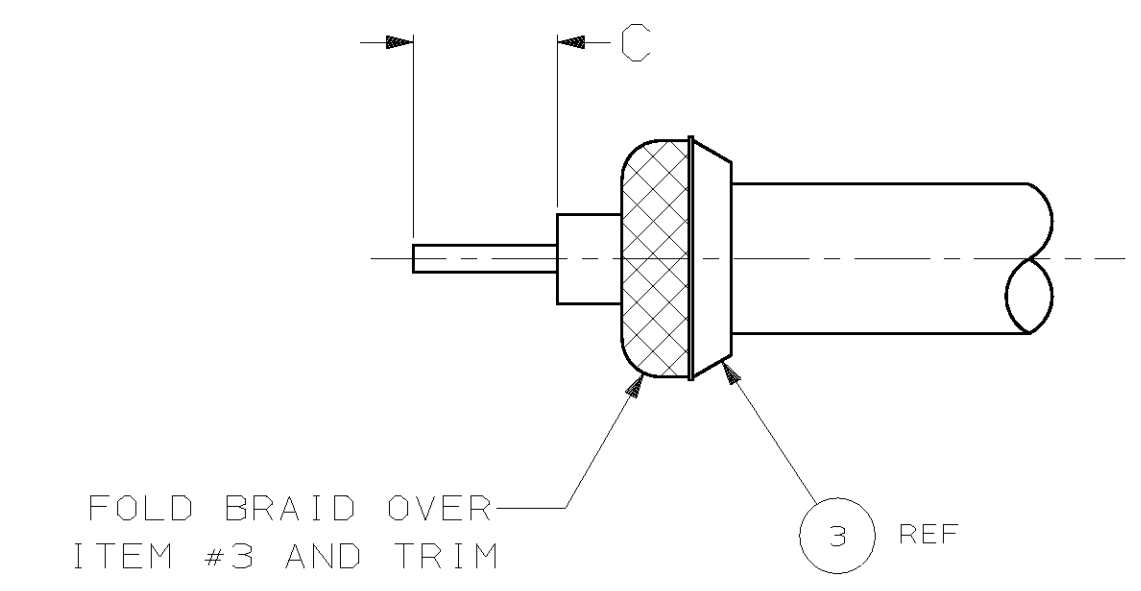
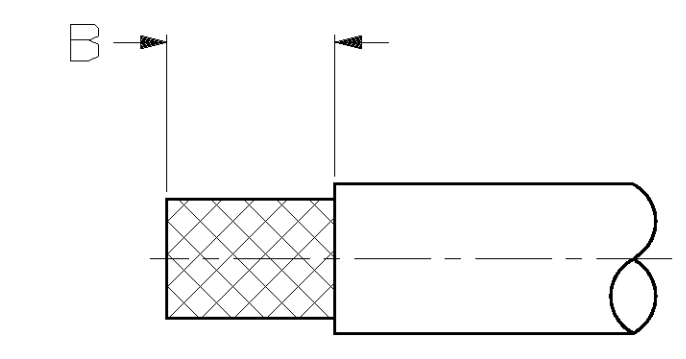
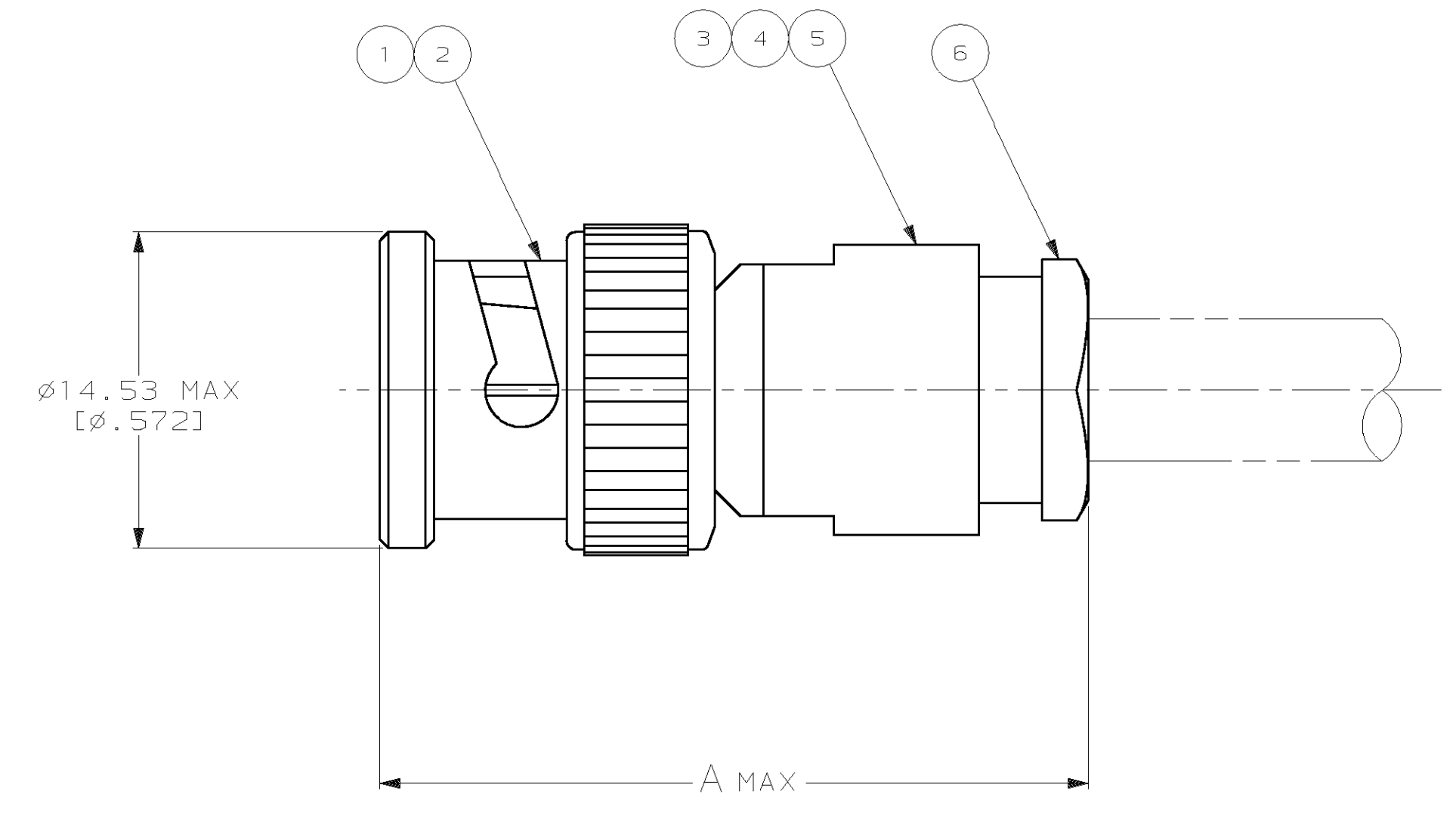


LOC		DIST		REV		ZONE		LTR		REVISIONS		DATE	APPD
AJ	16	P	F					H		REV PER OU20-0173-00		07JUN00	MO

- ① RG-59/U, 59A/U, 59B/U, 62/U, 62A/U, 62B/U, 71/U, 71A/U, 71B/U, 210/U
- ② RG-58/U, 58A/U, 58B/U, 58C/U, 141/U, 141A/U, 142/U, 142A/U, 142B/U, 55/U, 55A/U, 55B/U, 223/U, 400/U
- 3. USE INSTRUCTION SHEET 408-6851
- ④ SEE SEPERATE RESTRICTED CUSTOMER DRAWING



STEP #1

STEP #2

RECOMMENDED STRIP LENGTH

STAMPING	CABLE SIZE	C	B	A	⑥ NUT QTY=1	⑤ WASHER QTY=1	④ GASKET QTY=1	③ CLAMP QTY=1	② CONTACT QTY=1	① PLUG ASSY QTY=1	PART NUMBER	
SUPSD BY 221265-2/④	-	-	-	-	-	-	-	-	-	-	2-221265-1	
SUPSD BY 221265-2/④	-	-	-	-	-	-	-	-	-	-	2-221265-0	
OBSOLETE	AMP 1-221265-8	RG-179/U, 179A/U, 179B/U, 187/U, 187A/U	3.96 [.156]	7.92 [.312]	31.75 [1.250]	1-221280-2	221276-3	221277-4	1-221281-2	221268-6	221282-9	1-221265-8
OBSOLETE	AMP 1-221265-7	RG-180/U, 195/U	3.96 [.156]	7.92 [.312]	31.75 [1.250]	1-221280-1	221276-3	221277-3	1-221281-1	221268-6	221282-8	1-221265-7
OBSOLETE	AMP 1-221265-6	RG-8/U, 8A/U, 9/U, 9A/U, 9B/U, 213/U, 214/U	3.18 [.125]	7.14 [.281]	38.10 [1.500]	221274-3	221271-3	221279-1	221273-3	221269-2	1-221282-0	1-221265-6
OBSOLETE	AMP 1-221265-5	RG-174/U, 316/U	3.96 [.156]	7.92 [.312]	31.75 [1.250]	1-221280-2	221276-3	221277-4	1-221281-2	221268-4	221282-9	1-221265-5
OBSOLETE	AMP 1-221265-4	RG-302/U	3.96 [.156]	7.92 [.312]	31.75 [1.250]	221280-9	221276-3	221277-1	1-221281-0	221268-4	221282-7	1-221265-4
OBSOLETE	AMP 1-221265-3	RG-303/U	3.96 [.156]	7.92 [.312]	31.75 [1.250]	1-221280-1	221276-3	221277-3	221281-9	221268-2	221282-6	1-221265-3
OBSOLETE	AMP 1-221265-2	RG-122/U	3.96 [.156]	7.92 [.312]	31.75 [1.250]	1-221280-1	221276-3	221277-3	1-221281-1	221268-2	221282-8	1-221265-2
	AMP 1-221265-1	①	3.96 [.156]	7.92 [.312]	31.75 [1.250]	1-221280-0	221276-3	221277-2	1-221281-0	221268-4	413752-7	1-221265-1
	AMP 1-221265-0	②	3.96 [.156]	7.92 [.312]	31.75 [1.250]	221280-9	221276-3	221277-1	221281-9	221268-2	413752-6	1-221265-0
OBSOLETE	AMP 221265-9	RG-179/U, 179A/U, 179B/U, 187/U, 187A/U	3.96 [.156]	7.92 [.312]	31.75 [1.250]	221280-8	221276-2	221277-4	221281-8	221268-6	221282-4	221265-9
OBSOLETE	AMP 221265-8	RG-180/U, 195/U	3.96 [.156]	7.92 [.312]	31.75 [1.250]	221280-6	221276-2	221277-3	221281-6	221268-6	221282-3	221265-8
OBSOLETE	AMP 221265-7	RG-8/U, 8A/U, 9/U, 9A/U, 9B/U, 213/U, 214/U	3.18 [.125]	7.14 [.281]	38.10 [1.500]	221274-2	221271-2	221279-1	221273-2	221269-2	221282-5	221265-7
OBSOLETE	AMP 221265-6	RG-174/U, 316/U	3.96 [.156]	7.92 [.312]	31.75 [1.250]	221280-8	221276-2	221277-4	221281-8	221268-4	221282-4	221265-6
	AMP 221265-2	③	3.96 [.156]	7.92 [.312]	31.75 [1.250]	221280-4	221276-2	221277-2	221281-4	221268-9	413752-2	221265-2
	AMP 221265-1	④	3.96 [.156]	7.92 [.312]	31.75 [1.250]	221280-2	221276-2	221277-1	221281-2	221268-8	413752-1	221265-1

DO NOT SCALE PRINT. UNLESS SPECIFIED DIMENSIONS IN mm [INCHES] TOLERANCES ON: 2 PLC DEC ± 0.25 [.010] 3 PLC DEC ± - ANGLES ± -		DR 2-26-91 B. SCOTT		AMP Incorporated Harrisburg, PA 17105-3508	
MATERIAL		CHK 3-15-91 J. LIPPERT			
FINISH		APPD 4-3-91 M. PHILLIPS		NAME PLUG, CATEGORY A, SERIES BNC	
WEIGHT		APPD 4-3-91 J. LIPPERT		PRODUCT SPEC 108-12075	
		APPLICATION SPEC		SIZE D	CAGE CODE 00779
				DRAWING NO 221265	
				SCALE 4:1	SHEET 1 OF 1